



SOUTHEND



VERSUS
SWINDON
SATURDAY
3RD DECEMBER 1994
KICK OFF 3.00 PM



THE BLUES

MAIN SPONSORS



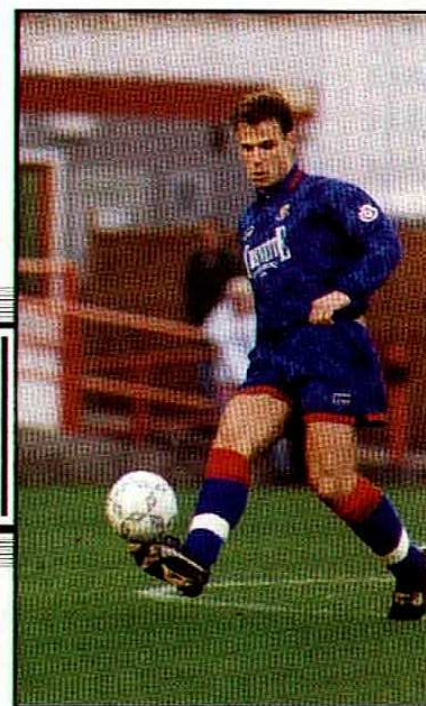
CREVETTE
CLOTHING Co.

MATCH SPONSOR



NEW HOLLAND

MATCH DAY MAGAZINE
£1.50





NEW HOLLAND

**UK's best selling tractors
for 21 consecutive years**



**Europe's best selling tractors
for 17 consecutive years**



**World's leading
tractor manufacturer**



**Europe's leading combine
harvester manufacturer**



**One of Britain's
Top 40 Exporters**





**SOUTHEND UNITED
Football Club Ltd**

Roots Hall, Victoria Avenue
Southend on Sea, Essex
Tel Switchboard (0702) 340707
Fax No: (0702) 330164

PRESIDENT

N. J. Woodcock

CHAIRMAN

V. T. Jobson

**VICE CHAIRMAN &
CHIEF EXECUTIVE**

J. W. Adams

DIRECTORS

J. Bridge, D. M. Markscheffel
W. R. Kelleway B. R. Gunner
C. V. Murphy C. Wooldridge

ASSOCIATE DIRECTORS

W. E. Parsons A. Jobson

R. J. Osborne

MANAGER

P. Taylor

ASSISTANT MANAGER

T. Foley

COACH

D. Greaves

HON. MEDICAL OFFICER

Dr. A. K. Sinha

SPORTS THERAPISTS

J. Gowens S. Barham

COMMERCIAL MANAGER

J. Carter

STADIUM MANAGER

D. Jobson

SAFETY OFFICER

G. Wright

STADIUM SECURITY

P. Evans

PROGRAMME EDITOR

T. Wynn

PETER TAYLOR'S VIEW

Good afternoon and a special welcome to everybody connected with our visitors Swindon Town for today's important Division One game. We played Swindon on the 22nd October, in what was a great match with great goals. The afternoon started on a sad note, however a minutes's silence for the late Kevin Morris the Physio of Swindon. I must say for that minute you could have heard a pin drop, showing great respect for a nice man. It was also very kind for some of the Swindon supporters to write to me thanking our supporters for behaving so well.

I would also like to mention Gordon Linton who sadly passed away this week. Gordon was an apprentice when I was a professional here, and was a good young goalkeeper. He was a good man and will be sadly missed. I would to send my deepest condolences to his family.

Since we last played Swindon our run has not been as consistent as I would have liked but has been better than our opponents. Sadly last week Swindon decided to part company with their manager John Gorman and bring in a player-manager Steve McMahan, who I am sure needs no introduction.

Back to our performances, we must improve our consistency. We have a good spirit here but must show it in every game. This was evident when we played Reading but distinctly lacking when we travelled to Sheffield United last week. The League is so tight this year, that after a defeat you must bounce back straight away and that is what I'm looking for today.

Get behind the lads with your vocal support.

Enjoy the game.

Peter Taylor

TELEPHONE SERVICES

Commercial Dept: 0702 437154
Shop: 0702 435067
Ticket Office: 0702 435602
Restaurant: 0702 351403
Soccerline: 0839 66 44 44
Infoline: 0839 66 44 43
Soccer Fax Line: 0336 41 81 77
All 0839/0336 calls cost 39p per
minute cheap rate & 49p per minute at
all other times

All contributed items published in this
programme do not necessarily reflect the
views of the Board or the Editor.

Front Cover Design By:
Billy Mahwinney

**Artwork, Typesetting,
Design and Production**
Alyton Press Ltd
Tel: (01268) 270423



VICTORIA CIRCUS
214 Churchill Square
Victoria Circus Precinct
Southend on Sea

ROOTS HALL
Victoria Avenue
Southend on Sea

Southend United Football Club

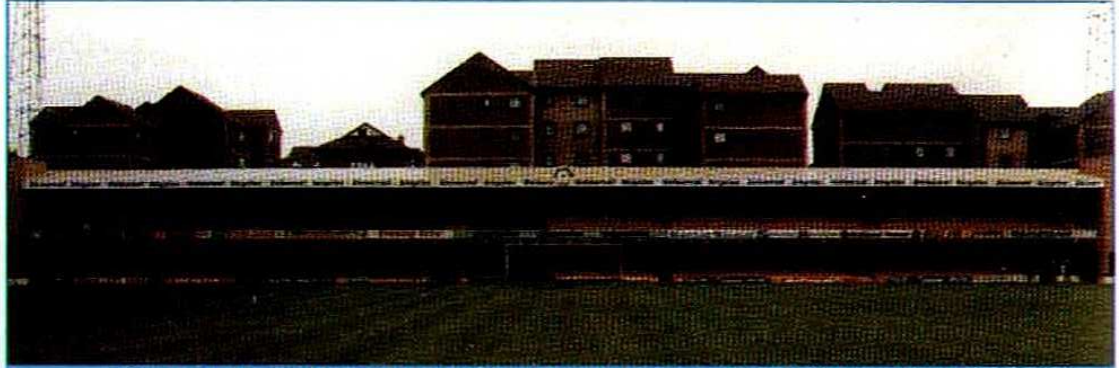
Replica Kits

available in the club shops NOW!!!

**GUARANTEED ONE OF THE CHEAPEST AND BEST VALUE
REPLICAS IN THE FIRST DIVISION**

ABOUT THE HALL

WELCOME TO RAYLEIGH BOYS CLUB



THE NEW FRANK WALTON STAND

Today we welcome Rayleigh Boys F.C. and their parents who for the second time have chosen Roots Hall as their venue for a Christmas celebration.

That in itself is not remarkable many groups use the Club and its social facilities at the Far Post Restaurant and the Training Centre for just such celebrations. The difference with Rayleigh Boys F.C. is that they celebrate by bringing young footballers to Football - and in numbers!

Their group today, which will swell the ever-increasing West Side Family Members Stand numbers, could well reach 800 youngsters and helpers. That we suggest is a staggering number from just one club.

Indeed it makes one wonder just what would happen if, on a regular basis Junior Football Clubs were to consider bringing groups to the club. Certainly, we believe the result would be to assuage any doubts of SUFC being denied entry to any possible Premier League New Division on grounds of small gates.

The Club, of course, has a part to play in such an initiative and so it does. Ticket Office Manager, Lesley Vincent, has arranged a special package price for the Rayleigh Group in line with Club policy and so both the Junior Club, and the Senior Club benefit today. We hope all the youngsters and their helpers have a superb day and will wish to return to

Roots Hall in the future.

The Club is always open to consider large group bookings and to offer party concessions to those who wish to consider bringing parties of all ages to Roots Hall. Clearly each application has to be considered on its merits and the commercial viability of the same has to be weighed sensibly but hopefully, there could be a seedbed of development for future support worthy of consideration by supporters who have connections with groups and those who don't currently support the Club but who may be converted. Any supporter who would like to consider such a group booking can write to the Club or telephone Lesley Vincent on 01702 435602 in the ticket office.

Finally, away from the Hall, it's the second night of the new initiative at the Training Centre. "Boots & Laces" has been established to fill a gap for those of "mature age" in the area who want a more sophisticated evening out. With good food, good cabaret, dancing to a band and with excellent decor and atmosphere, we believe it will, at an all-inclusive £25.00 per head, find favour with many people. The capacity is 150 per evening, and the "Night Spot" as it is termed is open on Fridays and Saturdays only. Booking is essential and the number to dial is 01702 462111.

The advise has to be "Zip up to Boots & Laces and put a spring in your weekend."

FLACK LANDSCAPES

Whitehouse Farm, Eastwood Road,
Rayleigh, Essex
Established 1910

ESSEX COUNTY COUNCIL APPROVED

Southend United choose Flack Landscapes for the landscaping and pitch reinstatement at Roots Hall and the Training Centre.

WHY DON'T YOU?

(01268) 742102



KIT SPONSORS

PETER TAYLOR
Rapid Car Cleaning
Company Ltd



MICK BODLEY
ALYTON PRESS
Basildon



**GRAHAM
BRESSINGTON**
The White Horse
Rayleigh



THEO FOLEY
The Bay Guest House
0702 588415



**CRAIG
DAVIDSON**
Bonus Print Processors
0702 618188



KEITH DUBLIN
Lt. Col. J. Boorman



**ANDY
EDWARDS**
Amanda & Sarah



PHIL GAIDELET
Progressive Print



MARK HONE
Bonus Print
Southend



**RONNIE
WHELAN**
Peter Devonald



**DOMINIC
IORFA**
Bob Gordon



GARY JONES
Dave Cooper



DAVE REGIS
Toby & Greg Bourle



JAE MARTIN
Mr. & Mrs. Ted Parsons



RICKY OTTO
Sue Devonald



**ROGER WILLIS
'HARRY'**
Progressive Print



CHRIS POWELL
Dave Carter
Magnatrol Ltd



SIMON ROYCE
The Bull
Great Totham



PAUL SANSOME
Allison Moyet



ANDY SUSSEX
Lt. Col. J. Boorman



**ANDY
THOMSON**
WIMPY
Southend Sea Front



STEVE TILSON
TECHTUNE
0268 766669



We would like to thank all the above companies and individuals for sponsoring their favourite players kit.



SWINDON TOWN F.C.

OUR OPPONENTS



Back Row: (Left to Right) Paul Bodin, Luc Nijholt, Brian Kilcline, Fraser Digby, Keith Scott, Nicky Hammond, Shaun Taylor, Andrew Thomson, Lee Middleton **Centre Row:** (left to Right) Kevin Morris (Former-Physio), Ross MacLaren, Mark Robinson, Austin Berkley, Adrian Viveash, Jan Aage Fjortoft, Chris Hamon, Andy Mutch, Marcus Phillips, Edwin Murray, Ty Goodert, Eddie Buckley (Kit Manager). **Front Row:** (left to Right) Joey Beauchamp, Martin Ling, Andy Rowland (First Team Coach), John Gorman (Team Manager), John Trollope (Youth Team Manager), Kevin Horlock, Wayne O'Sullivan. **Seated:** Ben Worrall, Jamie Pitman, Steve Reeves, Stuart James, David Elsey.

FRASER DIGBY

Goalkeeper - Joined Manchester United from school as an apprentice eleven years ago, Fraser did not make the first team at Old Trafford and had loan spells at Oldham Athletic and at Swindon Town before joining us on a permanent basis in September 1986. Has now made over 350 first team appearances for the club although he did return to Manchester United for a loan spell during season 1992/93.

NICKY HAMMOND

Goalkeeper - Former Arsenal apprentice, Nicky was signed on a free transfer in July 1987 and has spent spells on loan at Bristol Rovers, Peterborough United and Aberdeen. He had to wait until 1991 before he got an extended run in the first team and has now made over 60 League appearances for Swindon Town.

PAUL BODIN

Defender - Welsh international now in his second spell at The County Ground, Paul was initially signed from the now defunct Newport County for £25,000 in March 1988.

Three years later he was transferred to Crystal Palace for a fee of £550,000 but was unable to command a place at Selhurst Park and just ten months later he returned to Swindon.

LUC NIJHOLT

Defender - Signed from Motherwell for a fee of £175,000 in June 1993 having spent three years in Scotland following his transfer from Old Boys Basle in Switzerland. Luc started his career in Holland with FC Haarlem before moving to AZ 67 Alkmaar and FC Utrecht.

SHAUN TAYLOR

Defender - An ever present in the team again last season for the second consecutive year, Shaun was signed from Exeter City in July 1991 for £200,000. He came into professional football late signing for The Grecians from Western League Bideford Town at the age of 23. He played 233 first team games for Exeter before he joined Swindon Town. He has just signed a new contract which will keep him at The County Ground until 1997 but is currently out of action having suffered a broken arm in the defeat at Middlesbrough.

ADRIAN VIVEASH

Defender - A former apprentice at The County Ground, Adrian started in football as a winger but now plays in the back four. Spent last season out of action after breaking a leg in a Reserve Team fixture and was unfortunate enough to suffer a similar occurrence on the club's pre-season tour in Cyprus.

KEVIN HORLOCK

Defender - Northern Ireland U21 international, played against England last season, Kevin was signed from West Ham United on a free transfer in the summer of 1992 and made his League debut in the 3-1 defeat at Portsmouth that year after injury sidelined regular full-back Paul Bodin.

ANDREW THOMSON

Defender - Impressive performances in the Reserves saw former trainee Andrew force his way into the first team at the end of last season. Made his Premiership debut in the final game of the Premiership at home to Leeds United and has been a regular in the team this season. Scored his first senior goal for the club in the Coca-Cola draw at Brighton & Hove Albion.

WAYNE O'SULLIVAN

Defender - Full back Wayne made his debut for Swindon Town in an Anglo-Italian Cup tie against Oxford United at The Manor Ground in September 1992. A former trainee with the club he made his League debut as substitute in the first game of this season at home to Port Vale and started a League game for the first time in the following 1-0 home win over Watford.

TERRY FENWICK

Defender - Scored the equaliser for Q.P.R. in the 1982 F. A. Cup Final but was unable to prevent Spurs from winning the trophy in the replay. Fenwick has spent most of his career with London clubs having made 70 appearances for Crystal Palace, 256 for Queens Park Rangers (33 goals) and 93 for Tottenham Hotspur (8 goals). He has also made 8 appearances while on loan at Leicester City. Terry was signed by Swindon Town on a free transfer from Tottenham Hotspur in September 1993 but has recently been given a free transfer.

BRIAN KILCLINE

Defender - £90,000 saw Brian move from Newcastle United to The County Ground in January 1994. Brian is a big powerful central defender who although as brave as a lion is scrupulously fair. Brian was captain at Coventry City when they won the F. A. Cup and played 173 League games for the Sky Blues scoring 28 goals. A £400,000 transfer to Oldham Athletic took place in August 1991 but after playing only ten games for The Latics he moved onto Newcastle

United. Has played twice for England at U21 level.

MARK ROBINSON

Defender - Signed as an apprentice for West Bromwich Albion on leaving school in June 1985 and made his Football League debut against Sheffield Wednesday on 22 April 1986. Surprisingly he was not offered a contract at the end of this apprenticeship and was picked up by Barnsley but had to wait until 1989 before earning an extended run in the first team. In March 1993 he was transferred to Newcastle United for £450,000 but injury and the vast squad at St. James' Park prevented Mark from getting an extended first team run. In July 1994 he moved to Wiltshire for a Swindon Town club record of £600,000.

ROSS MacLAREN

Midfield - Currently combining playing duties with the role of Reserve Team Manager, Ross signed from Derby County for £140,000 in 1988 having won a Second Division Championship medal with The Rams. He has now made in excess of 150 League appearances for Swindon but injury has sidelined him for the past twelve months.

MARTIN LING

Midfield - A former Exeter City apprentice, Martin is another in his second spell at The County Ground. He initially signed for £25,000 in July 1986 but just 93 days later he was on the move to Southend

VISITORS MANAGER

STEVE MCMAHON

Born: 20/08/61, Liverpool

Appointed player/manager at the end of November following John Gorman's departure. He made his League debut for Everton at Sunderland in August 1980 and went on to register 11 goals in 100 League games for Everton before a £300,000 transfer to Aston Villa in 1983. With Villa Steve proved to be a midfield general of the highest quality but his career in the Midlands was short lived as Kenny Dalglish splashed out £375,000 to land him in his first major deal for Liverpool in September 1985, Playing his first game for Liverpool at Oxford. By the end of the season he had League and Cup medals to flaunt as Liverpool clinched the 'double'. Steve shared Anfield's phenomenal success, while at international level Bobby Robson drafted him into the 1990 England World Cup squad as cover for Bryan Robson. He was capped 17 times. On Christmas Eve 1991 Manchester City paid £900,000 for his registration until his move to Swindon.

Having been denied a first ever promotion to the old Division One:- 1990 because of financial irregularities, Swindon did make it to the new F.A. Premiership with victory over Leicester City in the 1993 play-off final at Wembley.

Paul Bodin's penalty gave the Wiltshire club a 4-3 win in a game which appeared to have slipped away from them when Leicester came back from a 0-3 deficit.

Swindon's fans were then given another major blow when Glen Hoddle, who had masterminded the club's success, left to take over at Chelsea and Swindon were relegated after only one season in the top flight.

Swindon were founder members of League Division Three in 1920. Following the formation of the Southern and Northern sections in 1921 they remained in the former throughout it's existence until 1958.

After 5 seasons in the newly formed Division Three, Swindon won promotion to Division Two for the first time in 1963, two years later they were back in Division Three but went up again in 1969.

Relegated to Division Three in 1978, Swindon went down to Division Four in 1982 and it took 4 years to begin an upward climb again.

Under Lou Macari Swindon won the fourth division championship with a record 102 point in 1985-86. A

year later they went up again, via the play-offs and last season apart have remained at that level since.

Lou Macari left in 1989 to be replaced by Ossie Ardiles. He was in turn replaced by Glen Hoddle in 1991 and he consolidated upon the good work of his predecessors to turn Swindon into one of the most attractive teams in the Country.

John Gorman took over on Hoddles departure and he had to endure a difficult first season. The first four games ended in defeat, with 14 goals conceded and it wasn't until November 24th that Swindon gained their first victory, 1-0 over QPR.

Only four more games were won- a 3-1 victory at Loftus Road at the end of April bringing a double over QPR- and Swindon remained bottom of the Premiership throughout the 1993-94 season.

The fans remained loyal to the club- the average attendance of 15,274, being an increase of 42% on the previous season. The club also received many plaudits for the quality of their football, however, they also conceded 100 goals, the worst record in all four divisions and now have the task of picking up the pieces in Division One.

After a reasonable start to the present campaign the Wiltshire club's form took a dip, leading to the departure of John Gorman. Today's game is the first League match in charge for player/manager Steve McMahon and, this afternoon aside, we wish him well.

Formed:
1881

Ground:
County Ground

Biggest Victory:
League:

9-1 v Luton T, Div. 3
28th August 1920

Cup:

10-1 v Farnham U.
Breweries
1st Round (replay), 28th
Nov 1925

Biggest Defeat:

1-10 v Man City,
F.A. Cup 4th Round
(replay) 25th January
1939

Most Points:

2 points a win: 64
Div 3 1968-69
3 points a win: 102
Div 4 1985-86
(League Record)

Most League Goals Scored:

100 Div 3(s),
1926-27

Most Goals in season

Harry Morris, 47
Div 3(s) 1926-27

Highest Attendance:

32,000 v Arsenal, F.A.
Cup 3rd Round,
15th Jan 1972

Most Capped Player:

Rod Thomas
Wales

Most League Appearances:

John Trollope, 770
1960-80

First Match in Football League:

1894

Did you know?

Despite being relegated from the FA Carling Premiership last Season, Swindon Town became the first team to score four goals against the champions Manchester United in League matches during the campaign.

FOLLOW THE BLUES

*Every night in the
Evening Echo*

**TOP MATCH REPORTS, PREVIEWS
AND REGULAR CLUB NEWS**

**For low cost
motor insurance...
go straight to the top
of the League**



PHONE NOW ON

081 5148668

94 Cranbrook Road, Ilford

YOU COULD SAVE ££££'s



Endsleigh

The Centre of Excellence programme has been up and running for approximately one third of "it's" season which is a 30 week span overall, with breaks being taken during the largest traditional holiday periods, namely Christmas and Easter.

One would assume this has been a reasonable enough period of time for all concerned to make evaluations and assessments. All concerned being players, coaches, parents, the Clubs and, by no means least, the Football Association.

Players will be asking, How good am I? How am I getting on? What have I achieved?

Coaches will be asking, How good are the players? What are their potential? How can we help them realise such?

Parents will be questioning, At

what stage is his development now? Where is he going? Are they helping him? Is he enjoying himself?

The Club will be viewing, What have we got? How good are they? Who will come through?

The Football Association's observations will surround the following. What is the standard? Is it improving? How far can we go with the programme?

It will be important that players link themselves to motivation, coaches to preparation, parents to co-operation, Clubs to rationalisation, and the football association to national standardisation in the efforts of all concerned to produce football players capable of enhancing the national stock in order that we can contemplate the winning of a "World Cup Final".



National Power

National Power Plc
Fort Road, Tilbury, Essex
RM18 8UJ

At Tilbury, National Power operates the largest power station in Essex and as well as putting power into industry and homes we are now helping to put a **SPARK** into football.

Excellence and Youth are two worthy objectives of our support - the new **CENTRE OF EXCELLENCE** launched by Southend United Football Club combines both of these - and National Power - Tilbury is very pleased to sponsor this venture.

We wish all the staff and young footballers every success and look forward to many **ELECTRIFYING** performances.

National Power - The Power to Perform at your Command



BOOTH WHITE

FOR SUCCESSFUL BUSINESS RECOVERY



YOU NEED SOMEONE
WHO IS QUICK
OFF THE MARK.

BOOTH WHITE

A quick reaction to financial problems is essential in today's economic climate. Booth White, through its network of offices, is able to deliver a rapid response to urgent situations. Telephone for our brochure or a free initial consultation.

2 Nelson Street, Southend-on-Sea, Essex SS1 1EF Tel: 0702 346484 Fax: 0702 334245

London Southend Medway Watford Ipswich Sidcup
Bristol Barnstaple Liverpool Chester Preston Llandudno

An independent firm Established over a century



BOOTH WHITE

SHARP

CANON

RICOH

TOSHIBA

PANASONIC



GROSVENOR CORPORATE CONSULTANTS LTD
THE COMPLETE OFFICE ENVIRONMENT COMPANY

Why not get **G C C** on your side? Our winning team will gladly discuss your needs, recommend and supply any kind of copier or fax required.

Combined with unbeatable finance and service terms, you will find **G C C** are in a league of their own!

FREEPHONE 0800 59 24 57

MINOLTA

NEC

MITA

SERVICE &
SUPPLIES



COPIERS



FAXES



SOUTHEND UNITED F.C. INFO-LINE 0839 66 44 43

all 0839/0336 calls cost 39p per minute cheap rate & 49p per minute at all other times

FROLICS

Suppliers to Southend United F.C.

*A Vast Selection
Of Carnival,
Goods and
Costumes*



**2, South Street,
Rochford
Tel: (01702)
541861**



LIFE OF THE PHYSIO

IN THE TREATMENT ROOM WITH JOHN GOWANS

Hello and welcome to the treatment room. The injury list has increased over recent weeks made up mainly of the Youth Team players and young professionals.

Jamie Southon after having a ham string problem has had a reaction from his back and so has been unable to train due to this.

Declan Perkins who came back from playing for the Ireland under-21's side with an injury, has a patella tendon problem.

Of the young lads we have Luke Morrish who has a thigh strain and he is busy building it up.

Carl Johnson who suffered an abductor strain has been to see a specialist on his thigh

problem that materialised two weeks ago.

Of our long-term injuries all three are making good progress. Hopefully, fingers crossed, Dominic Iorfa will be able to train on Monday if he suffers no reaction to the work he has been doing.

John Cornwell is also working steadily but we are limited to what he can do as it is still early days.

Dave Regis who had his knee flushed out and the cartilage removed is also doing light work at the moment, but it will not be until the New Year that he will be fit to play.

Howay the Lads!!

Football wins the Pools every Saturday



Every time you enter Littlewoods, Vernons and Zettors Pools or Littlewoods Spot the Ball you are helping the game at all levels. The Football Trust administers funds from the Pools, helping clubs to improve safety and comfort.

The Trust receives some £37 million every year, all of it coming directly or indirectly from Littlewoods, Vernons and Zettors Pools and Littlewoods Spot the Ball.

Football also receives £8 million a year for the use of fixtures on coupons and Littlewoods, the game's biggest benefactor, is the first sponsor of the FA Cup.

Up and down the country, clubs are building new grounds, stands, seating and roofing. All depend on the support of the Football Trust and on the success of the football pools.



LITTLEWOODS VERNONS ZETTERS
*Making sure football wins
the Pools each week*



THE FOOTBALL TRUST
Helping the game

THE FOOTBALL TRUST, WALKDEN HOUSE, 10 MILLION STREET, LONDON NW1 2EJ

OLD WHITE HORSE

39-41 High Street · Rayleigh
Tel: 0268 777622

The warmest welcome
awaits all football fans at
Essex's friendliest pub.



CHOICE OF REAL ALES



HOME COOKED HOT
FOOD AND BAR SNACKS
UNTIL 6.00PM MON-SAT
- BREAKFAST FROM 8.00AM



MORNING COFFEE
AFTERNOON TEA



'BIG JACKPOT' QUIZ BINGO
EVERY TUESDAY 9.00PM



ALL THE BIG SPORT ON 3
SCREENS IN 'MEL BATTY'S
FAMOUS SPORTS BAR'



'THE RAYLEIGH ROOM' -
FOR MEETINGS AND PRIVATE
FUNCTIONS



FREE PARKING FOR PATRONS

You'd be Batty to miss it!

SUPERLOOT

BLUES DAILY PRIZE DRAW

A Daily Draw Competition with
prizes to be won on a daily basis

*We need agents to sell
"Blues Super Loot"
tickets to their family
and friends or in their
offices, factories, clubs
or pubs or door to door*

Write or Phone

01702 437154

*(The Commercial Department)
for details*

For only **£1.00** Per week

THE NEW BLUES SCOREBOARD

Why not make someones
day with a message on the
NEW BLUES SCOREBOARD
BIRTHDAYS - WEDDINGS - CELEBRATIONS ETC.
or advertise your company and increase business!!

Price £10.00 a flash!!! (inc. V.A.T.)

Send your message, payment and
preferred match/time to:

**S.U.F.C. Commercial Department,
Roots Hall, Victoria Avenue,
Southend-on-Sea, Essex SS2 6NQ**

GIVE YOURSELF EXTRA-TIME

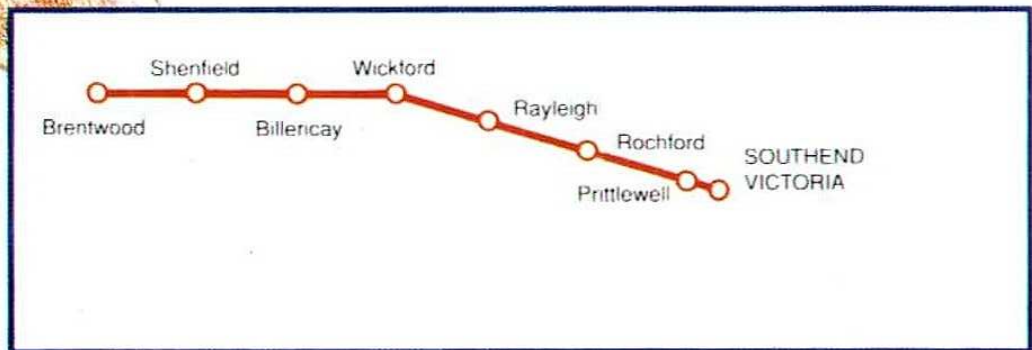
Take the train and see the game

By substituting the car for the train you'll bypass traffic jams and parking problems.

Frequent trains call at Prittlewell Station (less than five minutes walk to Roots Hall) on the line from Brentwood, Shenfield, Billericay, Wickford, Rayleigh and Rochford into Southend Victoria.

Regular travellers will benefit further with a Network Card which allows the holder to take up to three other adults at 1/3 off the full range of leisure tickets (including Cheap Day Returns). Up to four accompanying children (5-15 years) can travel for just £1 each.

On Saturdays and Sundays, parking is free at all Great Eastern Stations.



For full details of fares and train times contact your local telephone enquiry bureau:

London: 071-928 5100 (24 hour service)

Southend 611811 or

Colchester 564777



Great Eastern

Travellers Information



BY ROAD

- MIDDLESBROUGH -

Saturday 26th November

HOW TO GET THERE:

Follow signs London A127 to leave by Prince Avenue. In 20.3 miles branch left - signs Watford and at roundabout take third exit to join M25 to junction 27. Follow signs Harlow, Cambridge to join M11. Later Follow signs Huntington to junction 14. Forward A604 leaving motorway junction with B1050 continue forward to join A1 at Norman Cross roundabout take second exit. Follow road until junction with A47 then for town centre take the Bourne Road A6121, take second exit, follow road until junction with A47 then for town centre take the Bourne Road A6121, take second exit B1081 into Bypass. From Town centre follow signs Grantham A1 follow road until Colsterworth Service Area and at roundabout take second exit (junction with B6403). Keep forward (signposted Newark) into Grantham Bypass continue to Little chef Restaurant and at roundabout take first exit continue forward (signs Doncaster) into Bypass continue along road and at roundabout take third exit at roundabout with A57/A614 take third exit. At Blythe Service Area roundabout take second exit to join Motorway A1 (M) continue forward (signposted The North) and at end of motorway forward to join A. Continue to junction with A66, branch left (signposted Middlesbrough) then take right-hand lane to join A66. 1.5 miles further branch left (signposted Middlesbrough Centre) and at roundabout take third exit A175. TOTAL MILEAGE 271.7 miles.

When booking please make sure you are aware of the correct pick-up points.

Bookings can be made by contacting

PAUL HOLLAND

on **0702 293121** (after 6.30pm)

Pick-Up-Points are as previous editions:

LEIGH TIMBER CO. LTD

1388-1416 London Road, Leigh on Sea Essex
Tel: (0702) 75771/711366 Fax: (0702) 470993

LEARN TO TURN

WOODTURNING COURSES

Available for Beginners, Intermediate and Advanced

with **IAN DURRANI**

Professional Woodturner
and Acknowledged Expert

Course of 6 x 2 hour lessons £65.00
or 2 Day Intensive Course £110.00

n.b. To ensure individual attention, attendance on the intensive 2 day courses is limited to a maximum of 2 people.

FOR FURTHER DETAILS & COURSE AGENDA, CONTACT

LEIGH TIMBER WOODCRAFT CENTRE

BY COACH **(BLUES AWAY)**

- Middlesbrough -

Saturday 10th December

Depart: Shoebury Station 6.30am

Golden Lion 7.00am

Fare: £18.00 Concessions £17.00

(maximum price)

Ground Admission Price

£11.00 Seated £8.00 Terrace

No Concessions

Match Programme £1.50

- Charlton -

Saturday 10th December

Depart: Shoebury Station 6.30am

Golden Lion 7.00am

Fare: £5.00 All one price

Ground Admission Price

£10.00 Seated No Concessions

Match Programme £1.50

TICKET LINE 0645 10 10 10

In conjunction with The Football League, we are launching "Ticketline", a new ticket booking service which will compliment our existing box office service.

Customers wishing to book a ticket for any of our home games this season will now be able to ring 24 hours, 7 days a week on 0645 10 10 10 and book tickets using a credit card (all calls charged at local rate).

Customers will be charged £1.50 per ticket together with a transaction charge of £1.25 per booking. Although purchasing a ticket this way adds to the cost of watching football, we feel that this optional service offers people more choice and flexibility when booking tickets and will also provide a far greater number of telephone lines when those in our box office are busy."

Please note you can also still book direct with your credit card on 435602, our Ticket Office Line, during normal office hours.

Southend United F.C. cannot be held responsible for any information shown in this magazine. It is for guidance only



WESTLEIGH MOTORS LTD

USED CAR BONANZA

(DUE TO SALES OF OUR NEW 'M' REG MAZDAS)
WE NOW HAVE A SELECTION OF QUALITY USED
121 323 626 MX3 MX5 MX6 XEDOS

**TOP PART
EXCHANGE
PRICES**

"FREE"
WITH EVERY USED CAR SOLD

**2 YEARS PARTS
& LABOUR
WARRANTY**



**Mercury
one2one**

- ★ Easy To Use
- ★ Easy to Read Display Screen
- ★ Service Indicators
- ★ Battery Alarm
- ★ 99 Number Storage Facility
- ★ Voice Mail; Answering Service

**LOW
FINANCE
RATES**

**1 YEARS MOT
PRE-SALES
SERVICE**

(FREE OFF PEAK CALLS)

Mobile Phone Centre
Basildon

Westleigh Mazda
1355/1369 London Road, Leigh on Sea.
Tel: (01702) 72277

ON PRODUCTION OF THIS LEAFLET

3rd DECEMBER

ON THIS DAY IN HISTORY

1927 Watford

Home 3-0 5,320 Hick, Donovan, Fell.

Centre half Bill Robinson, a recent signing from Darlington, made his debut in this game. He played his last game for the Blues in the return fixture when we drew at Watford in the following April. He was then transferred to Torquay United..

1932 Bournemouth & Boscombe Ath. Home 2-1 6,014 Robson, Lewis.

We have entertained Bournemouth here on 47 different occasions and only lost seven times. The last time they won here was over 24 years ago.

1938 Northhampton Town

Away 2-2 5,568 Bushby, Smirk.

Alf Smirk's goal was his seventh of the season, he went on to be leading goalscorer that year with 13. How times have changed when you realise that the division was won by Newport County who went up into Division Two. They were replaced in our division by Norwich City.

1949 Northhampton Town

Away 0-2 12,009

Blues average attendance for this season was 13,929 which is just about the present day capacity. We have now conceded 108 goals at Northampton although have managed to score 60 ourselves.

1955 Walsall

Away 1-3 11,874 Baron.

Blues consolation goal by Kevin Baron was one of 46 he scored for Blues following his transfer to us from Liverpool for whom he had played over 140 matches. He later went on to Northampton Town, Gravesend & Northfleet and finished his playing career at Aldershot in 1960. His tragic death in 1971 was echoed when his father was one of the victims of Hillboro tragedy on 15th April 1989.

1960 Colchester United

Away 0-2 5,007

We have played our near neighbours 64 times since their entry in League football in 1950. At the end of this season, Blues escaped relegation by one point, however Colchester were not so fortunate and relegated to Division Four.

1966 Rochdale

Away 2-1 1,733 Flatt, Slack.

We have played 13 League games at Spotland and only lost three. During that time the average attendance there is under 2,500. Blues lowest ever away League attendance was against Rochdale in Division Four on 22nd. December 1973 when the game was seen by just 1,011.

1977 Rochdale

Away 2-1 1,020 Laverick, Parker D.

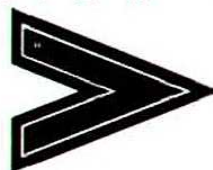
Mick Laverick played over 300 games in his career, a third of which were for the Blues during which time he netted 19 Southend goals. Most of his playing days were in the North where he turned out for Huddersfield Town, York City and Mansfield Town. Derrick Parker was another whose career was mostly in the North. He even had a spell in Finland before ending his days at Rochdale 10 years after his Southend days.

1982 Preston North End

Home 2-3 3,749 Mercer, Nelson.

This was Preston's fourth visit to Roots Hall and we were still looking to take maximum points. We have only beaten them 4 times in the twenty League games played. A number of these were on the plastic at Deepdale.

S U P P L I E D B Y



Mitre[®]
absolute performance[™]

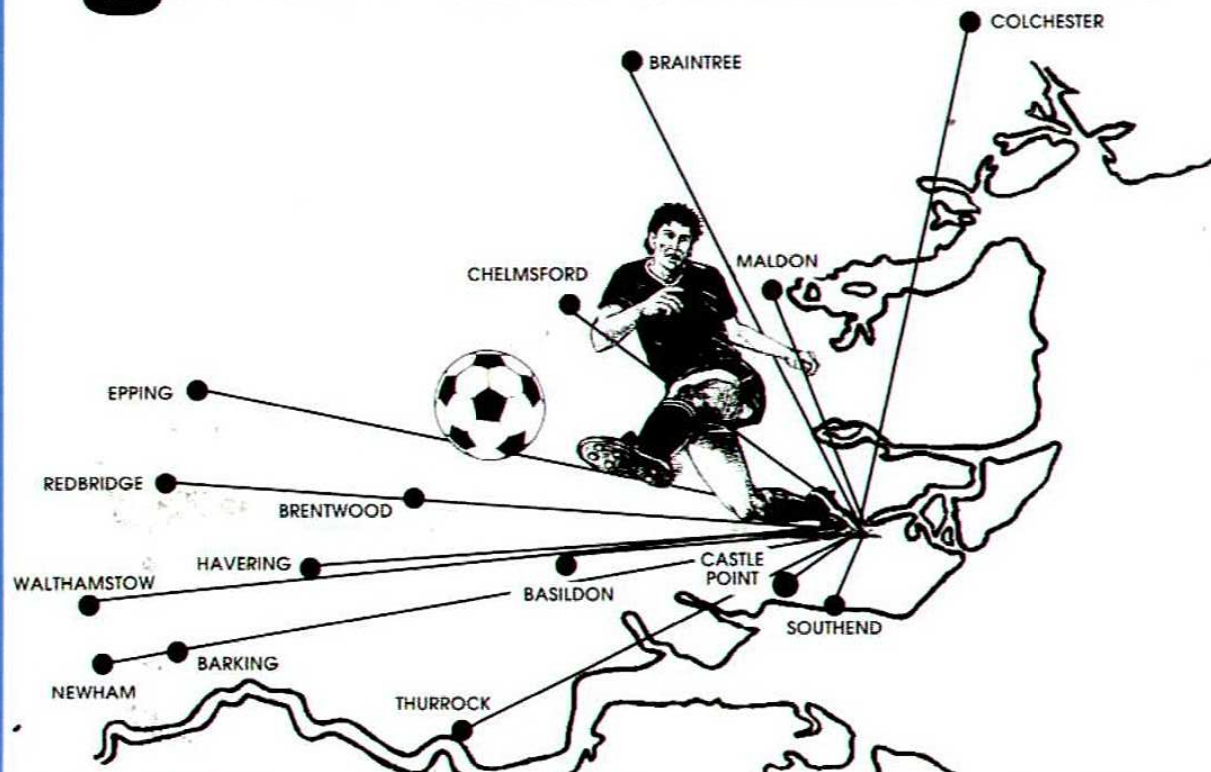
MITRE SPORTS INTERNATIONAL LTD.

BIRKBY, HUDDERSFIELD, HD1 5AJ. TEL: 0484 537488. FAX: 0484 530042

A GENESCO Company

G

Any good manager knows the key to success is to have good distribution



**15 different editions delivered to
750,000 homes throughout Essex
and East London every week**

**Yellow
Advertiser**

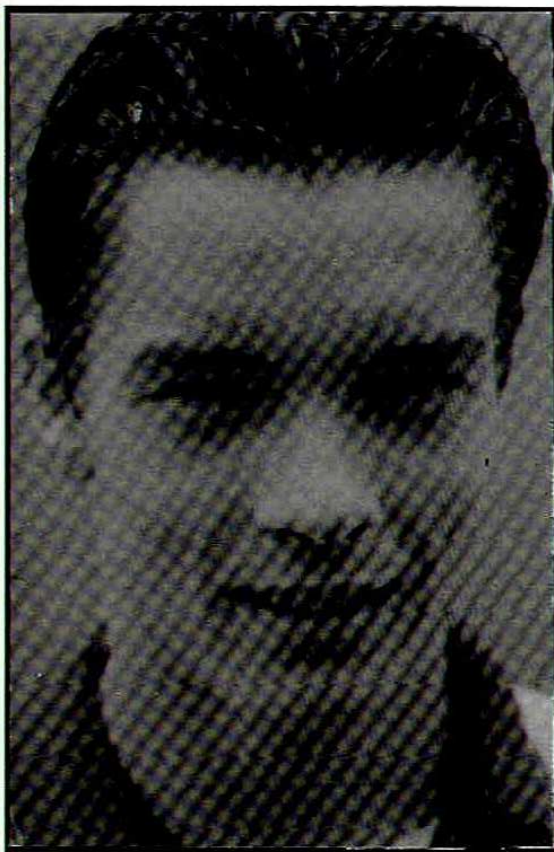
*The County's
Premier Newspaper*

Telephone: 0268 522722

ANDY EDWARDS

by
Terry Wynn

P L A Y E R I N V I E W



Andy Edwards

Andy Edwards, to my knowledge, has never been on a ski slope, but he has the nickname "Eagle" which belongs to the eccentric British hopeful Eddie. The Blues Eagle has made 122 league appearances since coming to Roots Hall as a YTS trainee. He made his debut and only appearance in the first team in season 1988-89 at the age of 17, and in the past two seasons he has been ever

present in the back four.

Standing six feet two inches in height, Andy hails from Epping and has never failed to give his all for the club, despite conceding a penalty with a rather careless tackle in the 2-0 defeat to Sheffield United at Bramall Lane last Saturday.

He is good in the air and formed a formidable partnership with Pat Scully before the Irishman left to join second division table-toppers Huddersfield Town last season. Always good in the air, he is a cool reliable defender who can move into attack when necessary and he has a couple of goals to his credit to date.

Andy is versatile and on occasions has played fullback with distinction, though he much prefers his more regular central role.

That penalty at Sheffield concerned manager Peter Taylor who has warned his defenders against rash tackles on opponents racing into the penalty area, for apart from the danger of a foul they are also known to make a dive and there was a suspicion that Saturday's offence was a case in point.

There's one thing about Andy, he learns quickly and is unlikely to repeat the mistake in future. Still a young player, just turned 23, he has an exiting future ahead of him and his burning ambition is to help Blues make it into the Premiership.

If that happens at the end of this season the Eagle will be flying high!



Telephone:

(0245) 322177

Fax:

(0245) 325878

6/10 Bancrofts Road, Eastern Industrial Estate,
South Woodham Ferrers, Essex CM3 5UQ

ACTION



Photo Nicky Hayes

"Harry" Willis cuts inside the
"Blades" Defence



Photo Nicky Hayes

"Ronnie" takes charge in midfield

SOUTHEND'S **NEW** NIGHTSPOT

EVERY
FRIDAY &
SATURDAY
8-11

STAR
CABARET

Boots & Laces

NIGHT



EASTERN AVENUE, SOUTHEND-ON-SEA, ESSEX
SUPERB 4 COURSE MEAL, STAR CABARET & DANCING
ALL INCLUSIVE PRICE £25 pp

TICKET HOTLINE 01702-462111 ACCESS & VISA ACCEPTED

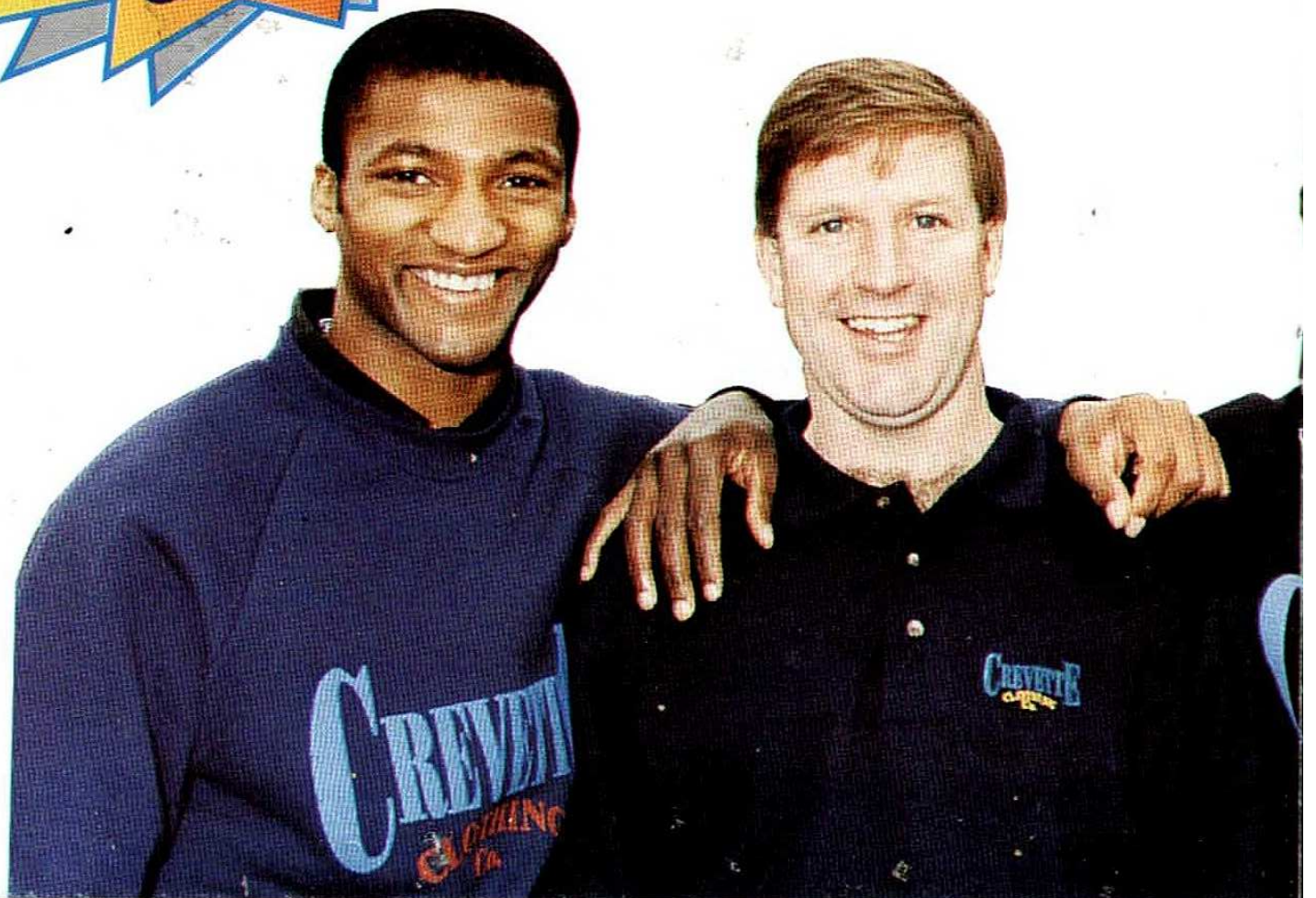
CREVETTE[®]

CLOTHING
Co.

SUPP



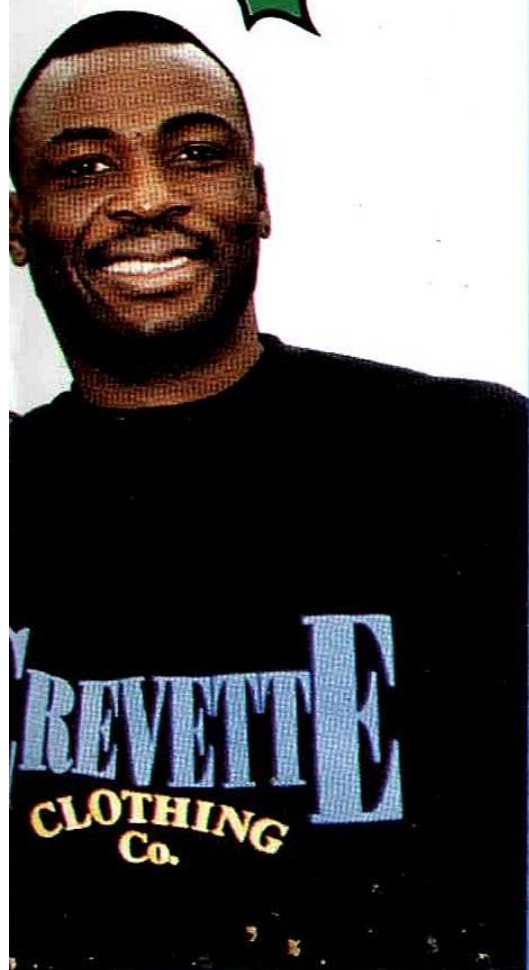
CHRISTMAS S



SPORTING THE **B**LUES

**FANTASTIC
PRICES**

SPECIALS



PIQUÉ SHIRTS 65/35 Poly Cotton (Embroidered)

NAVY - (Red/White)

BURGUNDY - (Sky/Blue)

BLACK - (Royal/Yellow)

ROYAL - (Navy/Red)

GREY - (Dark/Grey)

SIZES M/L/XL/XXL

£17.99

SWEATSHIRTS Raglan Sleeve 70/30 Cotton Poly Heavyweight (Large Print)

NAVY - (Royal/Red)

ROYAL - (White/Red)

GREY - (Black/Red)

BLACK - (Royal/Yellow)

SIZES M/L/XL/XXL

£24.99

BASEBALL CAPS (Embroidered)

BLACK - (Royal/Yellow)

£7.99

**ORDER DIRECT
VIA MAIL ORDER FORM
OVERLEAF**

SOUTHEND UNITED CLUB SHOPS

Roots Hall, Victoria Avenue, Southend-on-Sea, Essex SS2 6NQ

Tel 01702 435067

PLEASE NOTE

AT THE TIME OF PRINT ALL PRICES ARE CORRECT. HOWEVER, WE CANNOT BE HELD RESPONSIBLE FOR PRICE INCREASES. ANY ITEM WHICH HAS INCREASED IN PRICE WILL BE SENT WITH AN INVOICE FOR ANY OUTSTANDING AMOUNT. IF THIS IS NOT ACCEPTABLE PLEASE CHECK PRICES WITH US BEFORE ORDERING.

PLEASE MAKE CHEQUES/POSTAL ORDERS PAYABLE TO S.U.F.C. THANK YOU.

POSTAGE AND PACKING COST FOR GREAT BRITAIN AND IRELAND.

Orders to the value of:

£20

£40

£50

Please add for P+P:

£2.50

£3.50

£4.00

NAME _____

ADDRESS _____

DAYTIME TELEPHONE NUMBER _____

Please debit my Access/Visa Card Account

CARDHOLDERS NAME _____

VALID FROM _____ EXPIRY DATE _____

SIGNATURE _____

QUANTITY	SIZE	ITEM	AMOUNT

TOTAL _____

P&P _____

TOTAL ENCLOSED _____

**MANY OTHER STYLES
AND MERCHANDISE IN STOCK,
TEL: 01702 601351/435067
FOR DETAILS**

ALBUM!



Photo Nicky Hayes

"Chris Powell" shows his poise and class



Photo Nicky Hayes

"Jonesie" makes his presence felt

"SOUTHEND'S NEW NIGHT SPOT"

Southend United have opened their new night spot "BOOTS & LACES" at the Sports & Leisure Centre on Eastern Avenue.

This superb new venue opened on Friday 2nd December when Roy Walker, the star of "CATCHPHRASE" and "THE COMEDIANS" was the special guest celebrity with support from "RISKY BUSINESS".

The Club, which has been extensively refurbished to create an elegant, sophisticated atmosphere, **will be open every Friday and Saturday for dinner and dancing from 8.00pm until 1.00am.** An inclusive price of £25 per person covers a four course meal, the cabaret and

dancing. Bookings can be made by telephone on **01702 462111** using all major credit cards, or by personal callers at the club between 10.00am and 5.00pm on weekdays. The capacity has been limited to 150. A full bar service is available with ample car parking facilities.

It has long been felt that Southend and the surrounding area has needed a sophisticated night spot for couples or groups to enjoy fine cuisine, together with an opportunity to see a cabaret show and dance till the early hours.

We are very excited about our latest venture and look forward to welcoming you to "BOOTS & LACES". Book early to avoid disappointment.

SOUTHEND'S NEW NIGHT SPOT

Boots & Laces
NIGHT •

Dine & Dance till 1.00am

Superb Four Course Meal
All inclusive price
£25.00 per person
Phone Bookings
(01702) 462111

Special Guest Cabaret Star
Sat Dec 3rd Roy Walker
Sold Out
Fri Dec 9th Lew Lewis
Sat Dec 10th Dave Evans
Fri Dec 16th Charlie Smithers
Sat Dec 17th Bernie Wenton
Plus Support Groups

OPEN EVERY FRIDAY & SATURDAY

SWINDON

by
Kevin
O'Donnell

You may be surprised to find that today's match is the 94th league meeting between Blues and Swindon as the clubs have met only 19 times since 1966.

The clubs were both in the Southern League and became founder members of Football League Division Three in 1920. The first league match between the clubs was at the Kursaal on the 11th September 1920. Blues crashed to their first home league defeat 1-3, Tommy Nuttall scoring their goal before a crowd of 8,000. Swindon completed a double a week later with a 3 - 0 victory at the County Ground.

The first meeting at Roots Hall ended in a draw 0 - 0 in March 1956 before 12,500 fans and the last time Swindon were here it also ended all square. That was in March 1993 when Pat Scully was the Blues scorer in a 1 - 1 draw before 4,371 fans.

The season before Blues beat Swindon 3 - 2 at Roots Hall in what was a brilliant game of football. Brett Angel born just down the road from Swindon in Marlborough, scored two goals against the club he supported as a boy - one a superb 20 yard volley.

Blues squandered a great chance to go 2 - 0 up early in the second half when Dean Austin missed a penalty - the 8th time Blues had failed from the spot in 9 attempts:- and Swindon

equalised through Steve White.

Angel turned in an Andy Ansah cross to restore the Blues lead and Steve Tilson made it 3 - 1 in the 80th minute. Duncan Shearer set up a tense finale by bringing the score back to 3 - 2 but that is how it remained for Blues last victory over Swindon.

Blues record at the County Ground is a dismal one with only 6 victories in 47 visits. This season's 2 - 2 draw gained Blues there first point their since 1982 and their last league victory in Wiltshire was back in 1955.

However Blues did manage a victory at the County Ground in 1968-69 in the F. A. Cup third round. Swindon were on their way to promotion to Division two and victory over Arsenal in the League Cup final but could find no answer to a great performance from the Blues, then in Division Four.

Blues stunned the 18,828 crowd with goals from Billy Best and Chris Hamilton to gain the Club their reward of a 4th round visit to Mansfield, where Blues lost 1 - 2

In the previous 93 League matches Swindon have won 40, Blues 30 and 23 have been drawn, . However Swindon have not won at Roots Hall since 1962, although that was their 5th victory here in succession.

The record since the Second World War is!-

HOME					AWAY				
Division	Date	F	A	Gate	Date	F	A	Gate	
3(s)	12-10-46	2	0	11,275	10-5-47	1	2	13,498	
3(s)	11-10-47	1	0	11,605	28-2-48	0	0	14,858	
3(s)	1-1-49	3	4	10,000	28-8-48	1	2	19,863	
3(s)	25-3-50	2	0	9,300	5-11-49	2	2	12,000	
3(s)	17-2-51	8	2	8,000	7-10-50	1	4	12,623	
3(s)	8-12-51	2	2	9,000	26-4-52	0	1	7,469	
3(s)	2-9-52	3	0	10,500	27-8-52	3	1	14,276	
3(s)	30-1-54	3	1	4,000	9-1-54	0	3	8,217	
3(s)	4-9-54	4	1	10,500	20-4-55	1	0	4,230	
3(s)	30-3-56	0	0	12,500	2-4-56	1	1	8,728	
3(s)	16-2-57	1	0	8,000	6-10-56	2	3	7,572	
3(s)	25-9-57	2	3	8,716	2-10-57	1	2	8,035	
3	18-4-59	0	2	7,384	29-11-58	1	2	10,000	
3	19-3-60	1	3	8,451	28-11-59	0	2	8,822	
3	24-9-60	0	2	9,242	11-2-61	1	1	8,746	
3	28-4-62	0	2	5,764	9-12-61	0	0	6,634	
3	6-4-63	1	1	11,705	17-11-62	1	4	10,467	
3	24-9-65	4	2	9,748	19-3-66	0	4	12,527	
3	11-4-75	2	0	4,499	5-10-74	0	2	6,960	
3	31-10-75	3	0	4,258	6-3-76	0	0	5,585	
3	16-3-79	5	3	4,303	4-11-78	0	1	5,647	
3	29-20-80	1	0	5,282	20-10-79	0	1	6,027	
3	21-9-81	0	0	4,864	9-2-82	0	0	4,472	
4	26-12-84	3	2	2,942	6-4-85	0	2	2,693	
4	30-8-85	0	0	4,037	12-1-86	1	2	7,619	
2	9-11-91	3	2	7,709	21-3-92	1	3	8,628	
1	10-3-93	1	1	4,371	14-11-92	2	3	7,777	
25-10-50	F. A. Cup			1st Round	Home	0-3		9,000	
16-10-63	Football League Cup			3rd Round	Away	0-3		12,046	
4-1-69	F. A. Cup			3rd Round	Away	2-0		18,828	



Biffa
WASTE SERVICES

Biffa Waste Services Ltd
Basildon Depot
Unit 12,
Rawreth Industrial Estate
Rawreth Lane,
Rayleigh, Essex SS6 9RL

*Contact The Experts
For Your Complete
Waste Disposal Service*

CONTRACTORS TO SOUTHEND UNITED

TELEPHONE: (01268) 783529

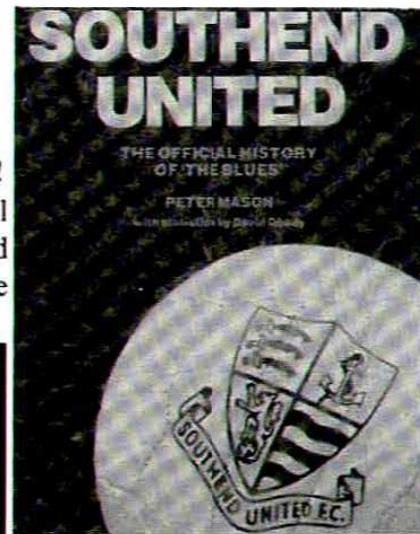
FASCIMILE: (01268) 784831

Southend United F.C.

THE OFFICIAL HISTORY

This highly praised book is available again - While Stocks Last! First published in February 1993, this 320 large page (hardback) full history of Southend United F.C, soon sold out. There is now a limited number reprint (statistics and text have been updated to include both the 1992/93 and 1993/94 seasons).

**DON'T MISS OUT AGAIN
AVAILABLE IN THE CLUB SHOPS
NOW**



**SOUTHEND
COMMUNITY
CARE
SERVICES
NHS TRUST**

**Southend Community Care Services
NHS Trust**



**SOUTHEND
COMMUNITY
CARE
SERVICES
NHS TRUST**

The Trust is delighted to support the opening of

**THE REAL HEALTH SHOP
Rayleigh**

**The shop offers free confidential advice on any
issues relating to health.**

**If you need any help or information contact:
The Real Health Shop, Tel: 0268 776479**

Eleven is the greatest number of first class cup matches that Southend Eleven is the greatest number of first class cup matches that Southend United have ever played in one season. It occurred last season (1993/94) when the Blues were involved in two Coca-Cola Cup ties, eight Anglo-Italian matches and one in the F.A. Cup. Of the eleven matches, Southend managed to win only four times, with two draws and five defeats. The first defeat came in the Coca-Cola Cup First Round against lowly Barnet, a dismal 0-2 home reverse, followed by a 1-1 draw at Underhill.

The Anglo-Italian Cup campaign started with a 1-1 away draw against Luton Town, followed by a 3-3 home victory over Watford which saw us through to the international section of the tournament. The promise of two home and two away matches against Italian clubs did not seem to fire the enthusiasm of the Roots Hall faithful, and the crowds for the matches against Pescara and Padova were poor, though not as poor as the estimated 500 who watched the Blues 2-1 victory in Cosenza. Brett Angell's last minute goal helped to make up for the 0-3 defeat in Florence two weeks before, where a very strong Fiorentina team were just too good for the Blues. The first home game, against Pescara, resulted in a defeat by 3 goals to 1, but the final group match saw the Blues coast home 5-2 against Padova, with Gary Jones getting two goals. This victory was enough to see Southend through to the English final, where we ended up bitterly disappointed, losing on penalties to Notts. County after drawing the 2-legged final 1-1.

Our only F.A. Cup match of the season was away to Luton Town, where 7,953 people saw the Hatters win 1-0.

COLLINSON FENCING CO LTD

Industrial & Factory Security Fencing & Gates
Larch Lap, Chain Link, Close Board, Ranch Type
- *In Fact, Any Type Of Garden Fencing* -
Chain Link, Concrete, Palisade & Panel Fencing

Main Contractors To British Rail
H.M. Government & Local Councils

DISCOUNT AVAILABLE TO CLIENTS WHO PRODUCE THIS ADVERT
STANNETTS, HIGH ROAD, LAINDON, BASILDON, ESSEX

BASILDON (01268) 411671/414218

THE NEW AMERICAN STYLE CAR WAYS AND VALETING CENTRE

RAPID CAR CLEANING CO.

Full interior & exterior wash

only £8.00

Full exterior wash

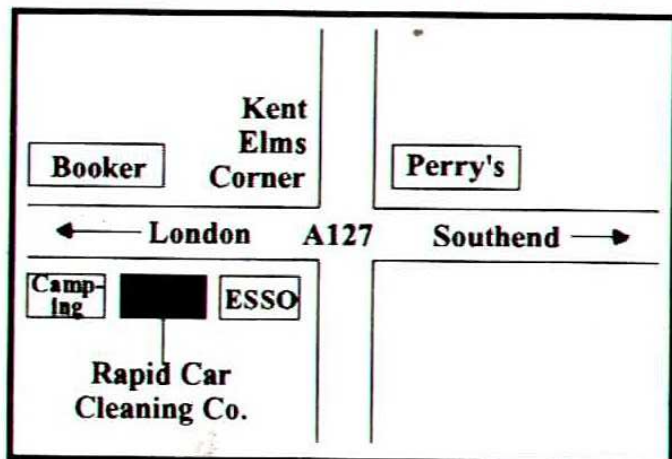
only £5.50

Full valet service

from £35.00

NO NEED TO BOOK

OPEN
8.00am - 6.00pm - MON - SAT
10.00am - 3.00pm - SUNDAY
116 Arterial Road
Southend on Sea
Essex
Telephone: (01702) 528436



If you're missing out on some of the action because of less than perfect vision, why not telephone Chas E. Wright Opticians for an appointment before the next game

CHAS E. WRIGHT
Ronald Brown Group


PILKINGTON
OFFICIAL SUPPLIER OF
CONTACT LENSES
TO SOUTHEAST
UNITED F.C.

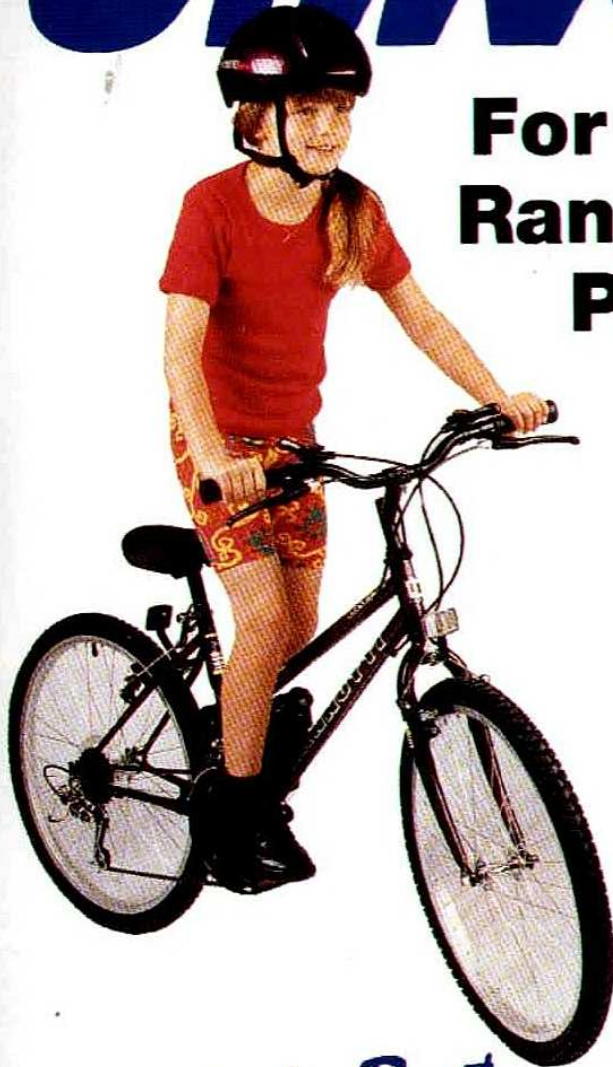
Penalty?! The ref needs glasses! (or do you?)

15% DISCOUNT FOR SUPPORTERS ON PRODUCTION OF A MEMBERSHIP CARD

CHAS E. WRIGHT OPTICIANS 162 HAMLET COURT ROAD WESTCLIFF-ON-SEA TEL 0702 354186 / 344805

Universal

**For Value,
Range and
Price**



*Britain's Best
Deals on Wheels!*

Universal Bicycles

Available locally from **LEISURETEC**,
815 London Road, Westcliff-on-Sea,
Essex SSO 9SY. Tel. 0702 470056

or nationwide from

**TOYS 'R' US, EMPIRE STORES, GREAT UNIVERSAL
STORES, LITTLEWOODS, KAYS, MARSHALL WARD,
GRATTAN, CO-OP, ASDA, NURDIN & PEACOCK,
CARGO CLUB** and cycle retailers throughout the U.K.



SPORTSMANS DINNERS AT S.U.F.C.'S TRAINING & LEISURE CENTRE



Southend United Football Club
Sports & Leisure Centre, Eastern Avenue
MONDAY 16th JANUARY - 7.30pm

Guest Speaker
Southampton's Effervescent Manager

Alan Ball

The former Everton, Arsenal, Southampton and England International footballer has a host of stories to tell



TICKETS £35 (+ V.A.T.) EACH DRESS BLACK TIE
TO BOOK PHONE (01702) 437154

YOUTH & RESERVES

NEXT OPPONENTS

Youth

Crystal Palace(H)
Root Hall
F.A. Youth Cup
Monday
5th December
K.O. 7.00pm

Reserves

Colchester Utd (H)
Thursday
8th December
K.O. 7.45pm

RESERVES

The Blues Two's have had some good results lately, beating Averley 3-1 in the Essex Senior Challenge Cup, Jamie Southon and Steve Parmenter getting the goals. They followed it up with a 2-0 victory against Woking and drew 1-1 with Sutton - Martin Nash getting Blues goal.

Their next game is here at home to Colchester Utd on Thursday, so do come and encourage the lads.

YOUTHS

On Saturday the Boys were at home to Millwall. It was a different day for them and for me, because I was away with the First Team due to the absence of Mr. Foley.

I was very pleased to find that when I telephoned the Training Ground at 1pm on my way to Sheffield that they had drawn 2-2

in what I am led to believe was a very entertaining match.

The lads were 0-2 down after 15 minutes and showed tremendous spirit to come back with good goals from Dave Derry and Larry Blunden. They also did well due to the fact that they had no more than six players missing because of injuries. We must give a mention to Phil Leggat, Paul Taylor and, once again Stevie Falmer who came in from our under-16 School Boys side to do an excellent job.

I am looking forward to Monday night when we entertain Crystal Palace, who have a very good youth side and an excellent youth policy. We meet the young Eagles in the third round of the F.A. Youth Cup, in a game which is taking place here at Roots Hall K.O. 7pm. I hope as many of you as possible can come along to encourage the Young Blues.

Hi Everyone,

Welcome once again to Roots Hall the home of the Blues.

Our Senior Citizens bingo/luncheon was a great success with Peter Taylor doing a magnificent job of calling out the numbers, judging by the comment made, everyone seemed to enjoy themselves.

Coming on to a much sadder note I was told through the grapevine that Gordon Linton a goalkeeper with Southend United during the early seventies passed away last week, Gordon left a wife and children. I never knew Gordon but from talking to people he was a family man and was a fireman by trade, living in Hockley. I would like to send my deepest sympathy to Gordon's family and friends, Gordon was I believe 38 years of age, no age at all.

Coming on to a brighter note we are now in the throes of organising the Christmas soccer school. This will be taking place at Bournes Green School on the 22nd - 23rd December from 10am - 3pm daily at a cost of £12-50 per person. If you require any further information please contact me on 0702-341351

The Senior Citizens annual dinner is now starting to take shape with over 130 people attending, a three course meal is being provided as well as entertainment and a gift for every Senior Citizen. I have

FRANKIE BANKS

with me for the next three weeks two lads on work experience, they are Daniel Pamphillon and Timothy Petrovic. I would like to welcome both boys and hope they enjoy their short stay with us. Daniel goes to Appleton School and Timothy goes to Southend High School.

Our Saturday teams today are:- Benfleet Villa U/14's with their Manager Colin Henwood and Southend Manor U/12's with their Manager Larry Muller. Our guest school today is Hadleigh Junior School with their Teacher Mrs Fountain and their helper Malcolm Newnham.

I hope you all enjoy your day and the match.

Thank you all for your kindness.

God bless.

Try Our
"Herta Hot
Dogs" From
The New
Refreshment
Bar In The
Frank
Walton
Stand



MEET THE TEAM COACH



If you want to go places, it pays to hire a good coach

That's why Southend United Football Club rely on Supreme Coaches to take them to all their away fixtures. When you set your sights on a place in the Premier League it makes sense to get there 1st-Class.

SUPREME COACHES

Official Team Coach to Southend United Football Club

Tel: (0702) 557261/552995 Fax: (0702) 554236

SUPREME COACHES
Est. 1924

SUPREME HOLIDAYS

Paris • Amsterdam • The Rhine from only **£79**

- Supreme Holidays - A member of ABTA
- Established over 65 years
- Supreme Supercoaches
- 1,000's of satisfied customers
- Local joining points
- Guaranteed against all currency surcharges

FREE COLOUR BROCHURE UPON REQUEST

AUTUMN • CHRISTMAS • SPRING **Tel: (0702) 552995**

SUPREME HOLIDAYS 303 London Road, Hadleigh, Benfleet, Essex SS7 2BN



ABTA 57511



SOUTHEND UNITED F.C. INFO-LINE 0839 66 44 43

all 0839/0336 calls cost 39p per minute cheap rate & 49p per minute at all other times

THE MANAGERIAL MERRY-GO ROUND



by
Nick Alliker

The managerial merry-go round in the world of football continued this week, with Brian Lawes being named as the new man in charge of GrimsbyTown.

This followed the announcement of Swindon Town's new boss, Steve McMahon. The Grimsby vacancy had been open for over six weeks since Alan Buckley left to take over the hot seat at West Brom. A job, incidently, that is proving to be a massive test.

The 33 year old Lawes moves to Blundell Park after starting his career at Burnley, followed by spells at Huddersfield and Middlesbrough, before joining Nottingham Forest. He'd been with Forest since 1988, starting in the side in the full back position. Lawes has named another Forest full-back as his assistant - Kenny Swain.

Other news this week, includes , Wolves decision to withdraw from the race to sign Liverpool star, Paul Stewart. This, after he was injured in a loan match. The two clubs had reportedly agreed a fee of £800,000 for the striker, but Stewart was injured during his final match, of a three month loan spell, and was sent back to Anfield, with a sustained groin strain. Meanwhile, still at Molineux, full back Andy Thompson has been ruled out of action for at least six weeks, with the news that he needs a hernia operation.

Millwall have completed the signing of Danish keeper Jimi Neilson. The 17 year old impressed the first division outfit while on trials, and joins the other international stars at the Den. The 6 foot 2 inch keeper has played 10 times for the Danish youth side.

Stories in the Sunday papers linked former England international, Chris Waddle, with a possible move to Middlesbrough. Manager Bryan Robson is also interested in bringing back Kevin Scott to the North East club. He's currently at Tottenham Hotspurs.

In last weekend's matches, Middlesbrough went back to the top of the table, with a 2-0 away win at Charlton. John Hendrie and Jamie Pollock were on target.

Previous top dogs, Wolves, could have retaken the top-spot on Sunday, but slipped up against lowly Derby County. The Wolves lost 2-0 at home.

Tranmere maintained their push for a play-off place, with an impressive 3 points gained at Reading. Ian Muir got two of the Rovers goals, in a 3-1 win.

But Bolton Wanderers, who've also crept into the frame went down 3-0 at Barnsley. That result has moved Barnsley into sixth place in the Table. Luton Town beat Swindon at the County Ground, while Grimsby Town drew 2-2 with Burnley.

In the battle of the basement, Notts County took the points from West Brom, with a 2-0 success, while Oldham beat Bristol City by the same scoreline at Boundary Park.

And finally, Southend slid to a 0-2 defeat at Sheffield United, with Dane Whitehouse, and the impressive Carl Veart beating Paul Sansome.

**SOUTHEND UTD
SOCCER FAX-LINE**

For comprehensive
and up to date
information from
the club, fax Blues

Fax Line on:

0336

418177



All 0839 0336 calls
cost 39p per minute
cheap rate & 49p
per minute at all
other times

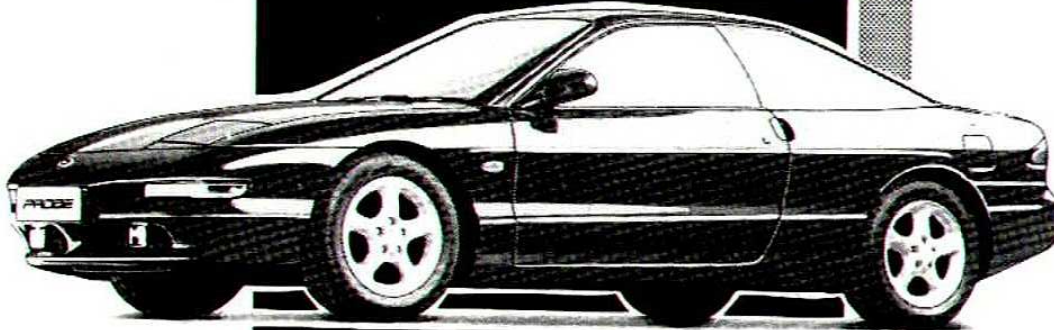
MAGNATROL

(0702) 206613

- THE ELECTRICIANS -

Always on the ball!

PERRYS



New Car Sales

Used Car Sales

Commercials

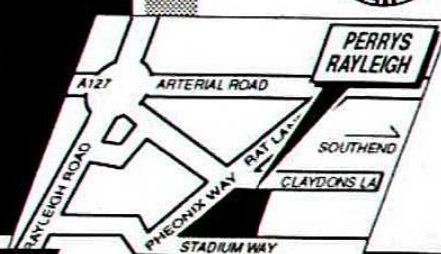
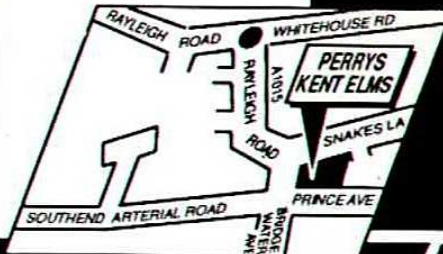
Servicing

Hire

Bodyshop

Rapidfit

Parts



**KENT ELMS CORNER
PRINCE AVENUE, SOUTHEND
0268 775544**

PERRYS

**STADIUM WAY
RAYLEIGH
0268 775544**

ESTABLISHED 1912

We put people first!



24th FEBRUARY 1951

by
Kevin
O'Donnell

MEMORY LANE

Football League Division Three (south) S.U.F.C. 8, Swindon Town 2 Football League Division Three (South)

Blues turned a 0-2 deficit into an 8-2 victory in this quite remarkable clash at the Southend Stadium.

Blues had already lost to Swindon 1-4 at the County Ground and 0-3 at home in the F.A.Cup that season and this match appeared to be going that way as the visitors led 2-0 after 14 minutes.

In the 6th minute Onslow hit a 30 yard effort into the Blues net and 8 minutes later Owen converted a perfect cross from Lunn.

Blues pulled a goal back after 18 minutes. Jimmy McAlinden, their Captain and a Northern Ireland international, beat two Swindon defenders before slipping the ball to Joe Sibley. His cross was crashed into the net by Tommy Tippett.

Five minutes later Blues were leading 3-2 and by half time it was 5-2 Reg Davies scored the equaliser and Cyril Grant's header put them ahead. Jimmy Lawler's 32nd minute shot was deflected into the net by a Swindon defender and Grant scored his second goal to complete the first half rout.

The rout continued in the second half which was only 2 minutes old when Reg Davies headed in McAlinden's cross.

After 61 minutes Joe Sibley went on a mazy run before setting up McAlinden. The Irishman's shot was blocked but Tippett slammed in the rebound. He completed his hat trick 3 minutes later Joe Sibley again the provider.

Blues were unlucky not to equal their record League victory (9-2 v Newport County 1936-37) in the dying minutes. Tippett's shot seemed to have crossed the line but he was denied a 4th goal by the referee who refused to award it.

The two points consolidated Blues' outside promotion hopes. At that time only the champions were promoted and Nottingham Forest were the leaders. In the end Forest went up with Blues in 7th place. The 92 League goals Blues scored in 1950-51 is still the club's record for a season.

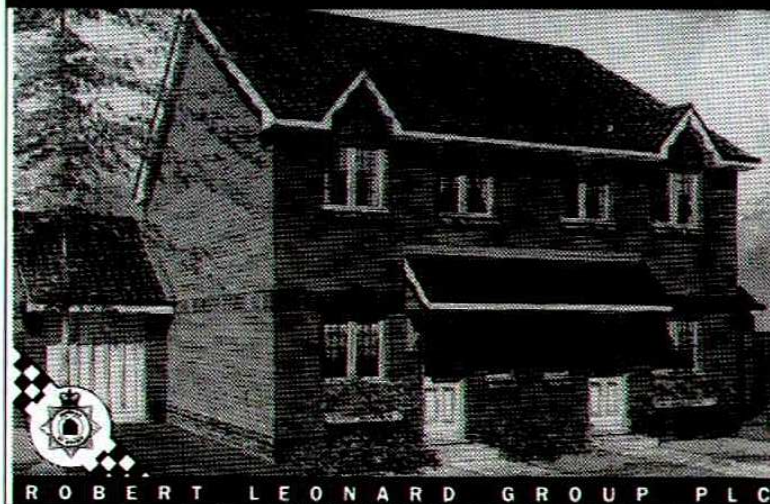
Attendance 10,000

Southend United:

Scannell, Loughran, Anderson, French, Stirling, Lawler, Sibley, McAlinden, Grant, Davies, Tippett.

Swindon Town: Upritchard, Lloyd, May, Kaye, Hudson, Batchelor, Lunn, Onslow, Owen, Millar, Bain.

A BEAUTIFUL 3 BEDROOM SEMI-DETACHED HOUSE £2500 CASHBACK ON COMPLETION.



SECURED BY DESIGN
ENERGY EFFICIENT TO MORE THAN TWICE
THE AVERAGE OF AN OLDER HOME

The Brodie - Plot 20
£72,950 YOU PAY £70,450

The Brodie - Plot 21
£73,950 YOU PAY £71,450

1 bedroom houses from £49,995
2 bedroom houses FIRST PHASE NOW RESERVED
3 bedroom houses from £71,950



Visit our showhome and Sales Centre
11am - 5pm Thur - Mon (including weekends).
Telephone Carol Judd on Wickford
(0268) 562700

ROBERT LEONARD GROUP PLC



The Junior Blues

HELLO AND WELCOME TO TODAY'S GAME

At our last home game the U/14's played against Stambridge United the score was a 3-3 draw. I am looking for some more schools to visit and need your help, if your school would like to meet a player and have a talk on his professional life, and how the Junior Blues works please phone me on 01702 603954.

MATCH MASCOT Daniel Kirby



Daniel is 9 years old and attends St Andrews Junior School, Hatfield Peveral. He supports only Southend United and his favourite players are Ricky Otto, Chris Powell, Paul Sansome in fact the whole team.

Daniel's hobbies include Football, Sailing, Watching Formula One Racing.

I would like to wish all my birthday guests a very happy day and hope they enjoy today's game.

HOSPITALITY DAY

Our next away game will be on the 26th Dec v Charlton price £10.00 per person.

Our next home hospitality day will be on the 17th Dec v Millwall who are bringing a team to play against us so please book in quickly.

Blues youth quiz night has been cancelled through lack of interest on the part of themselves. I have not had a reasonable response so it has to be cancelled for that reason.

Don't forget the Junior Blues panto is now on the 19th Jan starting at 7-00pm.

I would like to point out that the Juniors are not allowed to bring cans of drink into the ground at Roots Hall.

Payable prior to the date.

0702 - 603954

We have had to change the date of the Xmas Panto Show to the 19th January starting at 7.00pm



GOLFWEAR.



International
UK EUROPE USA AUSTRALIA



Corporate Uniforms, Workwear and Schoolwear.

Enterprise House, Belle Isle Road,
Leeds LS10 2DS
Tel: (0532) 774331 Fax: (0532) 707848

**OFFICIAL KIT SUPPLIERS
TO
SOUTHEND UNITED F.C.**

Enquiries welcome for
Professional and Amateur Kits
Embroidered or Printed Leisure and
Promotional Clothing



IN A WEEK IN WHICH THE ENGLAND CRICKET TEAM...

In a week in which the England cricket team, despite the best efforts of Essex batsman Graham Gooch has been sunk without trace in the First Test in Brisbane to give Australia a 1-0 lead in the Ashes Series, its good to know that the streets of Kircaldy have gone wild with delight.

The reason is the success of Raith Rovers. On Sunday they beat Celtic 6-5 in a penalty shoot out to win the Scottish Coca Cola Cup.

And who would deny the people of Kircaldy their celebrations as it was the first title ever won by Raith Rovers in their 111 year history.

At a time when football... indeed all sports... seem to be governed by the "Big Battalions" it is tremendously uplifting to hear of a victory for the underdogs.

So well done to Raith Rovers. There may be many connections

between the Scottish minnows and ourselves...but I can only think of one...and that is John McKinven.

What a superb player. Signed by Ernie Shepherd in 1960. Over the next decade he was a marvellous player for the Blues until a cruelly broken leg robbed him of his career.

A pacy and intelligent left winger John's play can be summed up in one word "quality"

Thinking of him now it seems to me he was a mixture of Matthew Le Tissier and Chris Waddle. He made just over 300 appearances for the Blues and scored 66 goals.

Up the Blues

Unit 15,
Samson House
A127 Arterial Road,
Laindon, Essex

Tel: (01268) 418189

CHEAPEST TV's & VIDEOS IN ESSEX

Portable TV's from	£85
Teletext TV's from	£99
Stereo TV's from	£140
VHS Videos from	£89
Stereo Videos from	£145



FREE ESTIMATES

TV and Video repairs on all makes



**Reconditioned TV's & Videos
- ALL FULLY GUARANTEED -**

As supplied to Southend United Football Club





CREVETTE
CLOTHING
Co.®

Creating
the right

image



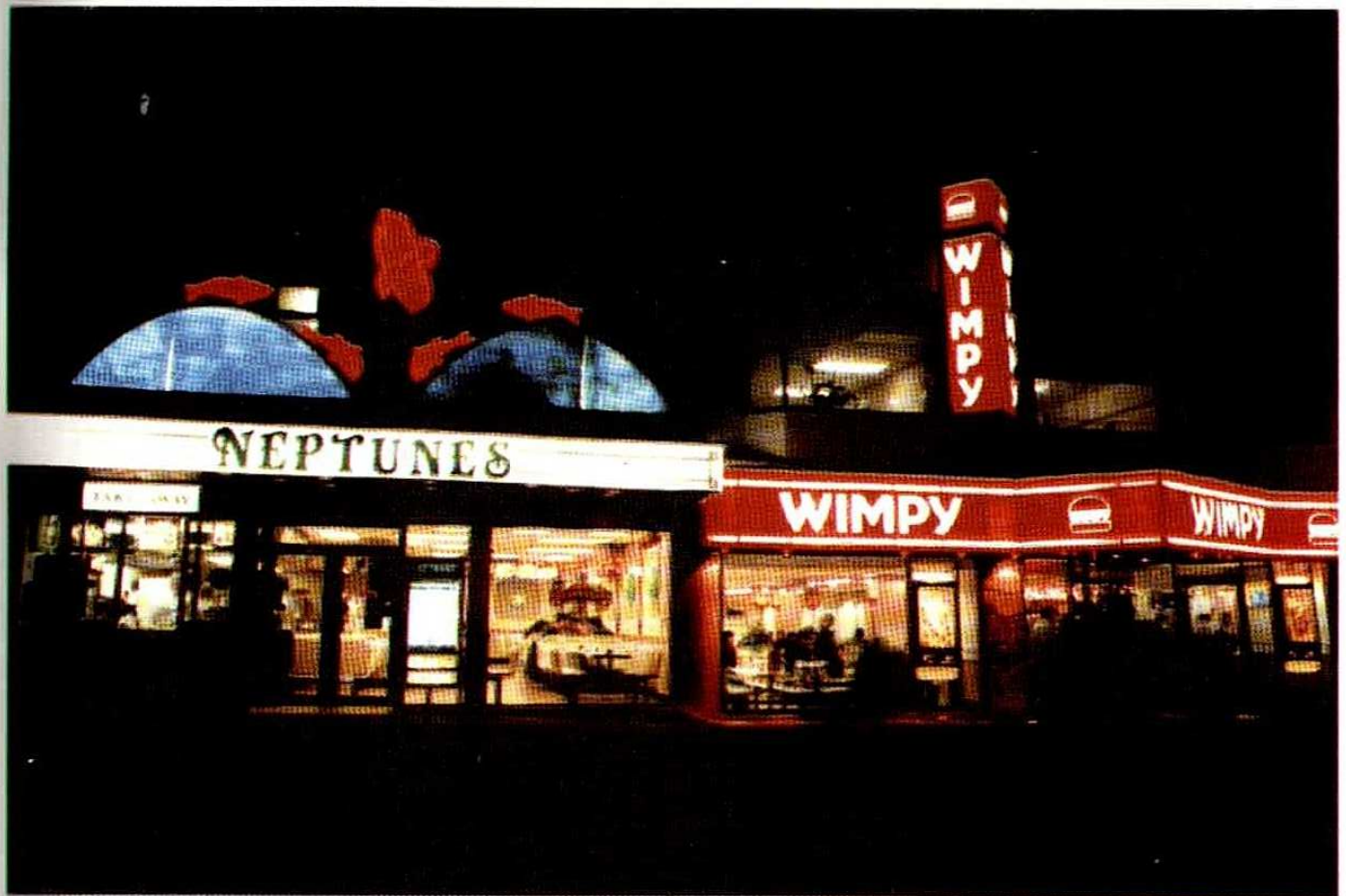
NEPTUNES Restaurant

40 Marine Parade, Southend-on-sea
Tel: (0702) 464466

No One Is Perfect, But We Are Nearer Than Others

THE WIMPY

41/2 Marine Parade, Southend-on-sea
Tel: (0702) 611968



MITSUBISHI MOTORS

See the exciting
range of New
& Used Mitsubishi
vehicles.

**FULL AFTER SALES
PARTS, SERVICE
AND ACCESSORIES**



TEST DRIVE A NEW OR USED MITSUBISHI NOW
THEY'RE DESIGNED TO BE DRIVEN

**Oasis
Garage**
APPOINTED DEALER

654 Sutton Rd,
Southend,
(0702) 619094



DATE	OPPOSITION	RES	POS	PTS	ATT	1	2	3	4	5	6	7	8	9	10	11	12	13	14	15	16	17	18	19	20		
13th	A Millwall	1-3	0	0	8,283	SANSOME	POOIE	POWELL	JONES	EDWARDS	DUBIN	HUNT	TILSON	TORFA	OTTO	THOMSON	HONE	MARTIN	MARTIN	MARTIN	MARTIN	MARTIN	MARTIN	MARTIN	MARTIN	MARTIN	
16th	H WATFORD - C.C. CUP	0-0	24	0	2,859	ROYCE	POOIE	POWELL	JONES	BRESSINGTON	DUBIN	HUNT	HONE	KORFA	OTTO	THOMSON	HONE	MARTIN	MARTIN	MARTIN	MARTIN	MARTIN	MARTIN	MARTIN	MARTIN	MARTIN	
23rd	A Watford - C.C. Cup	0-1	24	0	5,722	ROYCE	POOIE	POWELL	JONES	BRESSINGTON	DUBIN	HUNT	HONE	KORFA	OTTO	THOMSON	HONE	MARTIN	MARTIN	MARTIN	MARTIN	MARTIN	MARTIN	MARTIN	MARTIN	MARTIN	
27th	A Luton Town	2-2	20	1	5,918	SANSOME	POOIE	POWELL	JONES	EDWARDS	DUBIN	HUNT	HONE	KORFA	OTTO	THOMSON	HONE	MARTIN	MARTIN	MARTIN	MARTIN	MARTIN	MARTIN	MARTIN	MARTIN	MARTIN	
30th	H PORTSMOUTH	1-2	21	1	4,033	SANSOME	POOIE	POWELL	JONES	EDWARDS	DUBIN	HUNT	HONE	KORFA	OTTO	THOMSON	HONE	MARTIN	MARTIN	MARTIN	MARTIN	MARTIN	MARTIN	MARTIN	MARTIN	MARTIN	
3rd	H OLDHAM ATHLETIC	1-0	20	4	4,435	SANSOME	POOIE	POWELL	JONES	EDWARDS	DUBIN	HUNT	HONE	KORFA	OTTO	THOMSON	HONE	MARTIN	MARTIN	MARTIN	MARTIN	MARTIN	MARTIN	MARTIN	MARTIN	MARTIN	
10th	A Stoke City	1-4	23	4	11,808	SANSOME	HONE	POWELL	JONES	EDWARDS	DUBIN	HUNT	HONE	KORFA	OTTO	THOMSON	HONE	MARTIN	MARTIN	MARTIN	MARTIN	MARTIN	MARTIN	MARTIN	MARTIN	MARTIN	
13th	A Wokingham Wanderers	0-5	23	4	23,608	SANSOME	HONE	POWELL	JONES	EDWARDS	DUBIN	HUNT	HONE	KORFA	OTTO	THOMSON	HONE	MARTIN	MARTIN	MARTIN	MARTIN	MARTIN	MARTIN	MARTIN	MARTIN	MARTIN	
17th	H BRISTOL CITY	2-1	13	10	3,663	SANSOME	HONE	POWELL	JONES	EDWARDS	DUBIN	HUNT	HONE	KORFA	OTTO	THOMSON	HONE	MARTIN	MARTIN	MARTIN	MARTIN	MARTIN	MARTIN	MARTIN	MARTIN	MARTIN	
24th	H BOUTON WANDERERS	2-1	13	10	4,517	SANSOME	HONE	POWELL	JONES	EDWARDS	DUBIN	HUNT	HONE	KORFA	OTTO	THOMSON	HONE	MARTIN	MARTIN	MARTIN	MARTIN	MARTIN	MARTIN	MARTIN	MARTIN	MARTIN	
1st	A Sunderland	1-0	13	13	15,320	SANSOME	HONE	POWELL	JONES	EDWARDS	DUBIN	HUNT	HONE	KORFA	OTTO	THOMSON	HONE	MARTIN	MARTIN	MARTIN	MARTIN	MARTIN	MARTIN	MARTIN	MARTIN	MARTIN	
8th	A Barnsley	0-0	16	14	3,659	SANSOME	HONE	POWELL	JONES	EDWARDS	DUBIN	HUNT	HONE	KORFA	OTTO	THOMSON	HONE	MARTIN	MARTIN	MARTIN	MARTIN	MARTIN	MARTIN	MARTIN	MARTIN	MARTIN	
16th	H DERBY COUNTY	1-0	8	17	4,214	SANSOME	HONE	POWELL	JONES	EDWARDS	DUBIN	HUNT	HONE	KORFA	OTTO	THOMSON	HONE	MARTIN	MARTIN	MARTIN	MARTIN	MARTIN	MARTIN	MARTIN	MARTIN	MARTIN	
22nd	A Swindon Town	2-2	10	18	9,909	SANSOME	HONE	POWELL	JONES	EDWARDS	DUBIN	HUNT	HONE	KORFA	OTTO	THOMSON	HONE	MARTIN	MARTIN	MARTIN	MARTIN	MARTIN	MARTIN	MARTIN	MARTIN	MARTIN	
29th	H GRIMSBY TOWN	0-0	9	19	5,087	SANSOME	HONE	POWELL	JONES	EDWARDS	DUBIN	HUNT	HONE	KORFA	OTTO	THOMSON	HONE	MARTIN	MARTIN	MARTIN	MARTIN	MARTIN	MARTIN	MARTIN	MARTIN	MARTIN	
1st	H NOTTS COUNTY	1-0	6	22	4,302	SANSOME	HONE	POWELL	JONES	EDWARDS	DUBIN	HUNT	HONE	KORFA	OTTO	THOMSON	HONE	MARTIN	MARTIN	MARTIN	MARTIN	MARTIN	MARTIN	MARTIN	MARTIN	MARTIN	
5th	A Port Vale	0-5	9	22	7,141	SANSOME	HONE	POWELL	JONES	EDWARDS	DUBIN	HUNT	HONE	KORFA	OTTO	THOMSON	HONE	MARTIN	MARTIN	MARTIN	MARTIN	MARTIN	MARTIN	MARTIN	MARTIN	MARTIN	
12th	A Watford	0-1	10	22	8,551	SANSOME	HONE	POWELL	JONES	EDWARDS	DUBIN	HUNT	HONE	KORFA	OTTO	THOMSON	HONE	MARTIN	MARTIN	MARTIN	MARTIN	MARTIN	MARTIN	MARTIN	MARTIN	MARTIN	
19th	H READING	4-1	11	25	5,527	SANSOME	HONE	POWELL	JONES	EDWARDS	DUBIN	HUNT	HONE	KORFA	OTTO	THOMSON	HONE	MARTIN	MARTIN	MARTIN	MARTIN	MARTIN	MARTIN	MARTIN	MARTIN	MARTIN	
26th	A Sheffield United	0-2	12	25	13,405	SANSOME	HONE	POWELL	JONES	EDWARDS	DUBIN	HUNT	HONE	KORFA	OTTO	THOMSON	HONE	MARTIN	MARTIN	MARTIN	MARTIN	MARTIN	MARTIN	MARTIN	MARTIN	MARTIN	
3rd	- F.A. Cup (2)																										
10th	H SWINDON TOWN																										
17th	H Middlesbrough																										
26th	A Charlton Athletic																										
27th	H WEST BROMWICH ALBION																										
31st	A Burnley																										
2nd	H TRANMERE ROVERS																										
7th	- F.A. Cup (3)																										
14th	A Grimsby Town																										
21st	H PORT VALE																										
28th	- F.A. Cup (4)																										
4th	H WATFORD																										
11th	A Notts County																										
18th	- F.A. Cup (5)																										
21st	H SHEFFIELD UNITED																										
25th	A Reading																										
4th	H SUNDERLAND																										
11th	A Bolton Wanderers																										
7th	A Oldham Athletic																										
14th	- F.A. Cup (6)																										
11th	H LUTON TOWN																										
18th	A Portsmouth																										
21st	H STOKE CITY																										
25th	A Bristol City																										
1st	H WOLVERHAMPTON WAND																										
8th	- F.A. Cup - Sem Finals																										
8th	H BURNLEY																										
15th	A West Bromwich Albion																										
18th	H CHARLTON ATHLETIC																										
22nd	A Tranmere Rovers																										
29th	A Derby County																										
6th	H BARNSELY																										
20th	- F.A. Cup - Final																										

FAR POST RESTAURANT & BAR
AT SOUTHEND UTD.
FOOTBALL CLUB

PRE-CHRISTMAS LUNCH £12.50

Melon with Fruit
Seasonal Soup Of the Day
Oriental Prawn Rolls
(With Marie Rose Sauce)
Turkey Supreme Madagascar
(Green Pepper Sauce)
Chicken Chasseur
(Mushroom, Tomato & Onion)
6oz Sirloin Steak
(Far Post Sauce)
Pan Fried Trout
(Lemon Butter & Mixed Herbs)
Selection of Vegetables
Mince Pie & Brandy Sauce
Selection of sweets from the trolley
Coffee & Mints
Christmas lunch for the month of December,
including a free glass of house wine



CHRISTMAS DAY LUNCH £29.50

Chef's Tomato Soup
Prawn Cocktail Surprise
Melon Boat with Fruit
Trio of Sorbet
Roast Norfolk Turkey
(Served with Seasonal Trimmings)
Breast of Duckling
(Orange Sauce)
8oz Scotch Sirloin Steak
Darne of Poached Scotch Salmon
Chef's Vegetarian Special
Roast Potatoes, New Potatoes
Selection of Vegetables
Christmas Pudding & Brandy Sauce
Selection of Sweets from the Trolley
or Cheese Board
Coffee & Petit Fours
A five course Christmas Lunch



PRE CHRISTMAS DAY DINNER £16.50

Seasonal Soup of the Day
Garlic Mushrooms
Christmas Pate
(served with Melba Toast)
Prawn Surprise
Turkey Breast Cumberland
Chicken Kiev
Sirloin Steak Bordelaise
(Bacon, Mushroom, Shallots, Red Wine Sauce)
Grilled or Pan Fried Trout
(Lemon Butter, Mixed Herbs)
Selection of Vegetables
Christmas Pudding & Brandy Sauce
Mince Pie & Brandy Sauce
Selection of sweets from the trolley
Coffee & Mints
Christmas Dinner for the month of December including
a free bottle of house wine for a party of 5 or more

TELEPHONE BRIAN DEER ON 01702 340707 FOR A PARTY BOOKINGS AT THE FAR POST RESTAURANT & BAR

1994 - 95 SEASON TABLE

Team	P	W	D	L	F	A	Pt
Middlesbrough	18	11	3	4	26	16	36
Wolves	19	10	4	5	36	22	34
Tranmere Rovers	18	9	5	4	31	21	32
Bolton	19	8	5	6	31	24	29
Luton	19	8	5	6	28	23	29
Barnsley	18	8	5	5	19	18	29
Grimsby	19	7	5	7	27	23	28
Reading	18	8	4	6	21	18	28
Watford	19	7	5	7	21	22	28
Sheffield United	19	7	5	7	25	20	26
Derby County	19	7	5	7	22	19	26
Southend	19	7	4	8	19	31	25
Sunderland	18	5	9	4	22	17	24
Stoke	18	6	6	6	22	24	24
Burnley	19	5	9	5	21	23	24
Charlton	19	5	8	6	29	30	23
Oldham	19	6	5	8	24	25	23
Port Vale	18	6	5	7	22	23	23
Swindon	19	6	4	9	26	31	22
Millwall	19	4	7	8	24	28	19
Portsmouth	18	4	7	7	20	27	19
Bristol City	18	5	4	9	15	25	19
West Brom	19	4	6	9			



NEW HOLLAND TEAM CHECK

SOUTHEND UNITED

MANAGER:- PETER TAYLOR

- 1 PAUL SANSOME
- 2 MARK HONE
- 3 CHRIS POWELL
- 4 PHIL GRIDELET
- 5 ANDY EDWARDS
- 6 KEITH DUBLIN
- 7 ROGER WILLIS
- 8 RONNIE WHELAN
- 9 GARY JONES
- 10 RICKY OTTO
- 11 ANDY THOMSON
- 12 GRAHAM BRESSINGTON
- 14 ANDY SUSSEX
- GK SIMON ROYCE



NEW HOLLAND TEAM CHECK

SWINDON TOWN

MANAGER:- STEVE MCMAHON

- 1 FRASER DIGBY
- 2 MARK ROBINSON
- 3 PAUL BODIN
- 4 ROSS MACLAREN
- 5 ANDREW THOMSON
- 6 BRIAN KILCLINE
- 7 WAYNE O'SULLIVAN
- 8 STEVE MCMAHON
- 9 JAN AAGE FJORTOFT
- 10 ANDY MUTCH
- 11 KEITH SCOTT
- 12 JOEY BEAUCHAMP
- 14 KEVIN HORLOCK
- GK NICKY HAMMOND

BLUES AT HOME

Endsleigh Insurance
League Division One

MILLWALL

Saturday 17th December

K.O. 3.00pm

WEST BROMWICH

ALBION

Tuesday 27th December

K.O. 3.00pm



ERNEST
DOE
& SONS LTD

ERNEST DOE SONS LTD.,
WEIR POND ROAD,
ROCHFORD.

MATCH OFFICIALS

Referee:

Mr. S. W. Dunn

Linesmen:

Mr. B. Knight

Mr. S. Thomlin